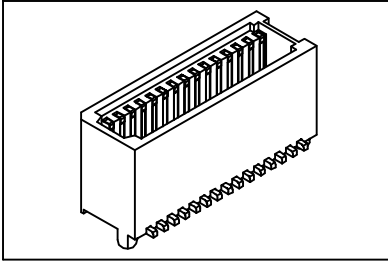


Female Board To Board 0.8mm(0.0315")

GXCON



Material:

Housing: High temperature housing withstands IR and VPR soldering methods.

Contacts: Brass.

Plating: Gold plated over nickel.

Electrical Characteristics:

Current Rating: 0.5 AMP.

Insulator Resistance: 100MΩmin. at DC 500V.

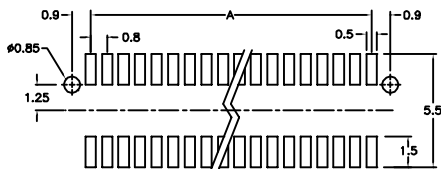
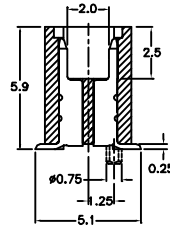
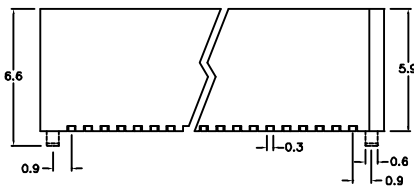
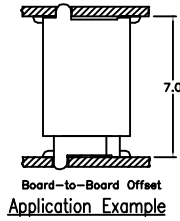
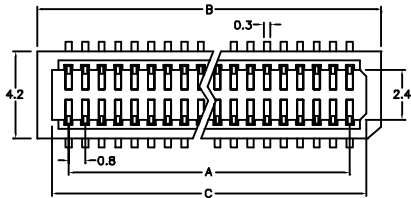
Contact Resistance: 40mΩmax. at DC 100mA.

Operating Temperature: -40°C~+105°C.

Max Processing Temperature: 230°C for 30~60 seconds.

Features:

- * Tube Packing.
- * Ribbon mating type



P.C. Board Layout
(Top View)

Position	10 Thru 100
Dimension	
A±0.05	0.8 X (No. of Positions /2-1)
B±0.15	0.8 X No. of Positions /2+1.8
C±0.05	0.8 X No. of Positions /2+0.8

Ordering information

PS42- 100 1 3 P 3
 Series No. of 1: Gold plated 3: S.M.D. Type. P: With Post 3: Bass 5.9mm.
 Pin Count